



FestABLE

National Festival of Specialist Learning

2 June 2018, National Star College, Cheltenham

VISITOR PROGRAMME



www.festable.org



Welcome everybody & thank you for coming.

On behalf of all the team we are delighted that you are part of FestABLE today & we hope you have an informative, interesting & enjoyable day.

Thank you so much to everyone who has worked hard to bring alive our vision for a national festival of specialist learning. We'd especially like to thank all the young people who helped plan this programme & those taking part in FestABLE. Thank you also to all our speakers, presenters, workshops leaders, contributors, sponsors & volunteers without whom none of this would be possible.

Although this is our first FestABLE we plan to be back in the summer of 2020, so please remember to sign up for updates on FestABLE by visiting our website www.festable.org or emailing info@festable.org we look forward to welcoming you & your friends & colleagues again next time. We hope you enjoy the day!

Elaine Gisby
Festival Director

Barney Angliss
FestABLE Programme Manager

FestABLE is sponsored by:



Our FestABLE partners include:



CONTENTS

Presentations - Stream 1 - Sports Hall	5
Presentations - Stream 2 - Manor Lounge, Ullenwood Manor	6
Presentations - Stream 3 - Drawing Room, Ullenwood Manor	6
Presentations & Workshops - Stream 4 - Training Centre	7
Presentations & Workshops - Stream 5 - New Court 6	7
Workshops - Stream 6 - Committee Room, Ullenwood Manor	8
Workshops - Stream 7 - New Court 9	9
Workshops - Stream 8 - New Court 15	9
Workshops - Stream 9 - New Court 18	10
Workshops - Stream 10 - Multimedia Studio	10
Creative Arts - Stream 11 - Theatre	11
Creative Arts - Stream 12 - Art & Design	11
Drop In Sessions - Stream 13 - New Court, StarBase	12
Drop In Sessions - Stream 14 - Various	12
Speakers & Presenters	15
Timetable	20
Speakers & Presenters	22
Market Stalls	34
Festival Activities	38
Festival Information	39
FestABLE Sitemap	40

FestABLE is hosted by:



Programme sponsored & printed by:



www.quorumprint.co.uk

Programme design & layout: Hattie Nicholson email: hattie_creative@live.co.uk



Contact us today to find out more about National Star's programmes

- Day and residential education courses
- Supported internships and a range of work-based learning courses, including work experience
- Integrated therapies, including speech and language, physiotherapy, drama, music and hydrotherapy
- Medical, nursing and psychological support
- Long-term living, respite and **StarBreaks**
- **LiftTraining** – learning independence for travel
- Assistive technology assessments
- Adult learning courses
- Education and social care training

Find out more

To find out more email admissions@nationalstar.org, call 01242 534928 or visit www.nationalstar.org/learning-programmes.



National Star

Realising the aspirations of people with disabilities

Presentations - Stream 1 - Sports Hall

** Please note all sessions in the Sports Hall will be supported by a British sign language interpreter. They will also be streamed live to StarBar & StarCafe to provide an alternative location for viewing.*

- **FestABLE Welcome Address:** David Ellis - chief executive of National Star
- **10.00-10.45 The SEND journey; are we nearly there yet?**
Speakers: David Bartram OBE, Sarah Driver, Bob Reitemeier CBE & Tania Tirraoro
 As the much-publicised reform of SEND reaches completion, experts from across the education sectors present personal reflections on the successes & frustrations so far. Has the vision of Sir Brian Lamb been realised or has it been clouded by a different political agenda? Will funding, training or technology hold the answer?
- **11.15-12.00 Assisting our future: How Jisc technology services support us**
Speakers: Andy Doyle & Rohan Slaughter
 Jisc will provide a brief introduction to their services to support digital learning in the education sector before discussing assistive technologies & inclusive education successes & projects to the present day. This will be a forward-looking view with thoughts & ideas about future developments for the sector.
- **12.30-13.15 Good Intentions, Good Enough?**
Speakers: Nigel Ellis, Nigel Evans, Dr George Julian & Kathryn Rudd OBE (Chair)
 The Lenehan Review 'Good Intentions, Good Enough?' report of November 2017 highlighted concerns around the rights & aspirations of young people with disabilities at a time when systems & services seem to count for more than the voices of those who use them. High-profile inquests have revealed deep concerns about choice & safety.
- **14.15-15.00 Is that it? The impact of the Children & Families Act**
Speakers: Renata Blower, George Fielding BEM, André Imich, Simon Knight & Gareth D Morewood (Chair)
 This discussion brings together the perspectives of policy-making, parenting, & living with disability through a period of significant change in SEND, from 'Removing the Barriers to Achievement' to the Children & Families Act 2014 & the headlines about Education Health Care Plans. Presenting context & challenge, Gareth will invite questions from the floor.
- **15.30-16.15 Sally Phillips in conversation with Barney Angliss**
Speakers: Sally Phillips interviewed by Barney Angliss
 Sally will be interviewed about her own personal journey in the SEND world & how her vision for a more inclusive society & better opportunities for people with disabilities would enrich everyone's lives.

Presentations - Stream 2 - Manor Lounge

● 11.15-12.00 Putting it all together: creating successful interventions in schools

Speakers: Sarah Driver & Chris Rossiter with guests

Research undertaken by Driver Youth Trust over recent years highlights that some schools & areas offer high-quality support for SEND driven by strong leadership. However, provision is fragmented & confusion remains over which children & young people are the true focus of literacy improvement. This session will focus on the need for more integrated thinking.

● 12.30-13.15 How children learn language

Speaker: Professor Caroline Rowland

Professor Caroline Rowland's research focuses on how children acquire language. Her data suggests the quality of early language input is of great importance in children's later language development. Her work explores how the child's environment promotes & shapes language growth. Caroline's language 0-5 project is the largest of its kind in the UK.

● 14.15-15.00 What is the future for speech & language support?

Speakers: Martha Currie, Mary Hartshorne (Chair), Dannii Keenan, Wendy Lee & Stephen Parsons

Across educational settings, the knowledge of speech, language & communication difficulties varies enormously. A range of evidence shows that speech & language therapy impacts positively on learning outcomes, behaviour & self-esteem. But will this evidence drive the changes we need to see in speech therapy practice & teacher training?

Presentations - Stream 3 - Drawing Room

Spaces for these intimate sessions will be available on a first-come-first-served basis.

● 11.15-12.00 These are our children - Session one

Speakers: Jonathan Bryan, Elly Chapple & George Fielding BEM

Through her campaign, 'These Are Our Children', Elly has been working with the parents of exceptional children to ensure that these amazing young people are not restrained or denied their dignity. Here, Elly discusses young people's experiences of education with Jonathan Bryan & George Fielding.

● 12.30-13.15 These are our children - Session two

Speakers: Josh Reeves & Alice Soule

Alice's popular blog 'Living With A Jude', reflects life as a parent of a child with learning disabilities & autism & insights into the differences between mainstream & specialist education. Her perspective is complemented by Josh Reeves' experiences. Josh is a former student of National Star & has very positive views about his value, his potential & his future.

● 14.15-15.00 These are our children - Session three

Speakers: Elly Chapple, Max J Green & Jon Reid

Jon Reid is an award-winning education lecturer specialising in social, emotional & mental health needs. Max J Green is an actor & was once a pupil in Jon's classroom. Together they discuss experiences of social exclusion, emotional conflict & the search for autonomy. Their often humorous encounters drew an instant response from their audience at Oxford Brookes University earlier this year.

Presentations & Workshops - Stream 4 - Training Centre

Spaces for these intimate sessions will be available on a first-come-first-served basis.

● 11.15-12.00 SEND 2018: The parents' perspective

Speakers: Renata Blower & Tania Tirraoro

Tania & her co-director, Renata, have made Special Needs Jungle the most widely-read independent source of support & information for parents of children & young people SEND. They will be discussing the latest experiences & issues from a national perspective.

● 12.30-13.15 Celebrating Adam: A conversation with Zoe & Paul Bojelian

Speakers: Zoe & Paul Bojelian

In 2010, Adam Bojelian won the Brit Writers Special Achievement Award. His mother Zoe continues to celebrate his life. At his first memorial service, NHS Confederation CEO Rob Webster described Adam's poem 'Leadership' as the 'gift that keeps on giving'.

● 14.15-15.00 What does the world know of us?

Speakers: Charlie Beswick & Jen Persson

Jen will talk about defenddigitalme, a non-profit, non-partisan group led by parents & teachers with expertise in data policy & data protection, freedom of information, biometrics, & child rights, calling for change in policy & practice at the Department for Education to make all children's data safe, fair & transparent. Charlie will present Our Altered Life: Showcasing difference to create acceptance.

Presentations & Workshops - Stream 5 - New Court 6

● 11.15-12.00 LEAP early autism intervention

Speaker: Laura Wilby

The Local Early Autism Programme (LEAP) has been run as a successful pilot in Surrey by Laura Wilby, Education Psychologist. The LEAP team visit each child twice a week - at home & at pre-school - demonstrating techniques & strategies for learning & socialising. Parents report their children are more confident & better able to interact.

● 12.30-13.15 Experiential PMLD & autism workshop

Speakers: Rachel Fitzpatrick & Stuart Saxton

An opportunity to explore the experiences & resources of a sensory environment, enabling learning & being, in a PMLD & autism teaching area. Looking at strategies for best practice including sensory processing & Intensive Interaction. Parents, carers, support workers & learners will be able to see how students are taught at National Star. There will be experiential activities, video evidence supporting the work & a chance to discuss the practices with experienced & qualified practitioners.

Presentations & Workshops - Stream 5 - New Court 6 cont'd

Spaces for these intimate sessions will be available on the day on a first-come-first-served basis.

● 14.15-15.00 Experiential PMLD & autism workshop

Speakers: Rachel Fitzpatrick & Stuart Saxton

An opportunity to explore the experiences & resources of a sensory environment, enabling learning & being, in a PMLD & autism teaching area. Looking at strategies for best practice including sensory processing & Intensive Interaction. Parents, carers, support workers & learners will be able to see how students are taught at National Star. There will be experiential activities, video evidence supporting the work & a chance to discuss the practices with experienced & qualified practitioners.

Workshops - Stream 6 - Committee Room

Spaces for these intimate sessions will be available on the day on a first-come-first-served basis.

● 11.15-12.00 Building the SEND workforce discussion

Speakers: David Bartram OBE (Chair), Dr Helen Curran, Anne Heavey & Simon Welch

In the first part of an extended discussion, David Bartram chairs a panel including Simon Welch (National Star), Dr Helen Curran (Bath Spa University) & Anne Heavey (NEU), looking at how national policy has affected SEND training & development.

● 12.30-13.15 Building the SEND workforce: A strategy for the future

Speakers: Jules Daulby (Chair), Claire Dorer & Simon Knight

'We now buy other people's solutions to problems we barely understand in SEND,' says Simon Knight. Jules Daulby, teacher trainer, chairs the second part of this extended discussion with Claire Dorer (NASS), they will be focussing on new ways of working & upskilling to tackle the increasing pressure on specialist provision.

● 14.15-15.00 Testing the water: assessment & SEND workshop

Speakers: Will Millard & Bart Shaw

This LKMco workshop draws together findings from recent studies on assessment & the relationship between SEND & poverty. There will be an in-depth discussion of gaps in prioritisation of SEND, using case studies from specialist & mainstream settings. These will be placed in the context of research on teachers' knowledge & development.

Workshops - Stream 7 - New Court 9

● 11.15-12.00 Person-centred practice

Speaker: Michael Surr

Moving beyond tokenism – Micheal Surr (nassen) presents a solution-focussed approach to developing person-centred practice.

● 12.30-13.15 Education, Health & Care Plans: A new foundation or a near failure?

Speakers: Ben Allchin, Victoria Coyle, Rhena Khan, Daisy Russell, Tessa Philbert & Eleanor Wright

The Department for Education promised a person-centred & joined-up approach to identifying & meeting the needs of children, young people & their families, offering engagement & participation so that they have greater choice. Practitioners from the front lines reflect on the progress that's been made & the changes that are still needed.

● 14.15-15.00 Governing with parents, carers & young people

Speakers: Dr Adam Boddison, Bethlyn Killey & Julie Lamb

With so many challenges over recent years & 10% of special schools predicting budget deficits, is the role of governor becoming professionalised? Can parents, carers & learners still have a voice in the governance of their school or college? This panel combines exceptional experience with huge passion & commitment to create the best outcomes for young people.

Workshops - Stream 8 - New Court 15

● 11.15-12.00 An Introduction to Lego-based therapy within a specialist setting

Speaker: Dannii Keenan

Lego-based therapy is an evidence-based social communication programme, originally developed for children with high functioning autistic spectrum disorder; however, we have experienced positive outcomes for individuals with a wider spectrum of communication difficulties. This session will outline the development & purpose of the approach, discuss how it can be adapted for individuals with more complex needs & provide practical examples of an adapted Lego-based therapy group.

● 12.30-13.15 Functional vision (assessment & strategies)

Speakers: Tom Emerson & Suzanne Pollard

National Star has a student base with a range of visual difficulties. Visual impairments can be a result of ocular or cerebral damage & can significantly impact a student's ability to engage in college life. The occupational therapists will discuss how they assess students' functional vision & devise strategies to support visual engagement in the college setting.

● 14.15-15.00 Physio beyond the plinth

Speaker: Verity Fisher

Have you ever considered what it would be like to suddenly suffer a life-changing injury necessitating hours of rehabilitation? Or what it would be like to require weekly physiotherapy for most of your life? Painful? Tedious? Boring? Exploring some of the alternatives to purely conventional physiotherapy illustrates how young people's motivation & ability can be enhanced by reframing therapy goals. Case studies demonstrate what those with complex disabilities can achieve with a 'slight' change of environment.

Workshops - Stream 9 - New Court 18

● 11.15-12.00 ResearchSEND: Journal Club

Speakers: Michelle Haywood & Sarah Rhodes

ResearchSEND was co-founded by Michelle Haywood & Professor Michelle Lowe, Institute of Education, University of Wolverhampton to promote the importance of research in meeting the needs of learners with SEND. ResearchSEND encourages teachers undertaking their own personal research, supporting their CPD & their interest in further study projects, for example a master's degree. The Journal Club will discuss a different journal article in each session.

● 12.30-13.15 ResearchSEND: Journal Club

Speakers: Michelle Haywood & Sarah Rhodes

ResearchSEND was co-founded by Michelle Haywood & Professor Michelle Lowe, Institute of Education, University of Wolverhampton to promote the importance of research in meeting the needs of learners with SEND. ResearchSEND encourages teachers undertaking their own personal research, supporting their CPD & their interest in further study projects, for example a master's degree. The Journal Club will discuss a different journal article in each session.

● 14.15-15.00 SOS!SEN parent workshop

Speaker: Eleanor Wright

Eleanor is widely respected as a trainer, speaker & advisor on children's rights in education & the process of Education, Health & Care assessment. Here, Eleanor presents one of her very popular workshops for parents, providing essential information & expertise to support their journey through the system.

Workshops - Stream 10 - Multimedia Studio

● 11.15-12.00 Listening through stories - Storyworlds Life workshop

Speakers: Sandra Smith & Dr Esther Walker

This workshop explores 'listening' using stories, photographs & text. A common complaint about services is 'they don't listen' yet professionals think they do listen. So what's going on? What is it you want others to hear? What stops you from listening? How do your words, facial expressions or body language show that you're listening (or not)?

● 12.30-13.15 Listening through stories - Storyworlds Life workshop

Speakers: Sandra Smith & Dr Esther Walker

This workshop explores 'listening' using stories, photographs & text. A common complaint about services is 'they don't listen' yet professionals think they do listen. So what's going on? What is it you want others to hear? What stops you from listening? How do your words, facial expressions or body language show that you're listening (or not)?

● 14.15-15.00 Listening through stories - Storyworlds Life workshop

Speakers: Sandra Smith & Dr Esther Walker

This workshop explores 'listening' using stories, photographs & text. A common complaint about services is 'they don't listen' yet professionals think they do listen. So what's going on? What is it you want others to hear? What stops you from listening? How do your words, facial expressions or body language show that you're listening (or not)?

Creative Arts - Stream 11 - Theatre

● 10.00-10.45 TwoCan Theatre - Toucan performance

TwoCan has brought to life the colourful story by David McKee (the creator of Elmer the patchwork elephant). The mischievous theatrical adventure integrates a creative use of sign language & audio description, making the story something for everyone to enjoy.

● 11.15-12.00 TwoCan Theatre - Toucan workshop

TwoCan has brought to life the colourful story by David McKee (the creator of Elmer the patchwork elephant). The mischievous theatrical adventure integrates a creative use of sign language & audio description, making the story something for everyone to enjoy.

● 12.30-13.15 TwoCan Theatre - Toucan performance

TwoCan has brought to life the colourful story by David McKee (the creator of Elmer the patchwork elephant). The mischievous theatrical adventure integrates a creative use of sign language & audio description, making the story something for everyone to enjoy.

● 13.30 Lunchtime special film screening - Special Needs: Failure to Educate

Speakers: Imogen Harper & Philip Sime

The inadequate level of SEN support for children in schools is revealed in this documentary. MA Broadcast Journalism students, Imogen & Philip, speak to families, teachers & experts about the current problems & potential solutions. Central to this film is a consideration of society's failure to understand & therefore support SEN children.

● 14.15-15.00 TwoCan Theatre - Toucan workshop

TwoCan has brought to life the colourful story by David McKee (the creator of Elmer the patchwork elephant). The mischievous theatrical adventure integrates a creative use of sign language & audio description, making the story something for everyone to enjoy.

Creative Arts - Stream 12 - Art & Design

● 10.00-12.00 A celebration of summer

National Star led creative art children's workshop. This workshop will involve making customised bunting, sun catchers & Mexican mirror pictures with National Star creative arts volunteer staff. Visit Art & Design to book.

10 spaces available on a first-come-first-served, booked on the day. Must be age 4+. Please note booked spaces do not include support.

Creative Arts - Stream 12 - Art & Design cont'd

● 14.15-16.15 A celebration of summer

National Star led creative art children's workshop. This workshop will involve making customised bunting, sun catchers & Mexican mirror pictures with National Star creative arts volunteer staff. Visit Art & Design to book.

10 spaces available on a first-come-first-served, booked on the day. Must be age 4+. Please note booked spaces do not include support.

Drop In Sessions - Stream 13 - StarBase. New Court

● All day Natspec: Have your say

Clare Howard - CEO of Natspec & young people who have been involved in the Natspec project 'Learner Voice' are leading the discussions in this zone. Topics will include issues such as transport, sex & relationships & your future. Drop in & share your views.

● All day Irwin Mitchell legal surgery

Speak with their education specialists who have a wealth of experience in helping young people with disabilities access education & training. They can answer your queries in relation to education provision, EHC plans, & specialist placements, & answer any queries on associated health & social care provision as well.

● All day National Star: Look inside my life

Look inside my life is a peer-led research project which gives voice to the lived experiences of young people with complex disabilities. Davina Jones - National Star lead on policy & research will facilitate workshops throughout the day will look at how young people have influenced their social & environmental outcomes to ensure they have full lives of their own choosing.

Drop In Sessions - Stream 14 - Various locations

● All day Discover technology to access the world around you

Karten Centre, New Court (14a)

National Star's technology innovation team will show you how to use eye-gaze technology to control the computer & play games. Hack-my-phone: find out how to make your mobile phone more accessible & even turn it into a communicator. Make your own stop-animation. Learn to program using fun games. Control a computer using your voice to write a story.

● All day Circus-themed immersive sensory space

Karten Centre, New Court (14b)

This is a circus-themed immersive sensory space, which will be supported by National Star's occupational therapy team. You can go in a few at a time to enjoy the space & the staff are on hand to explain how the elements work together & answer your questions.

● All day Quiet break-out space for people with disabilities Physiotherapy (14c)

Break-out space for people with disabilities in our physiotherapy suite including soft mats & overhead track hoists.

Please note requires supervision by parents / carers.

● All day Small soft play room for children Sensory Room 3 (14d)

Break-out space: soft play room. Drop-in & sign-up dependant on numbers. Please note requires supervision by parents / carers.

● All day Have a go at playing accessible sports Dance Studio (14e)

Run by StarSports, where festival goers can drop in to play boccia & polybat.

Please note requires supervision by parents / carers.



Enjoy delicious breakfasts, lunches and afternoon teas at
StarBistro in central Cheltenham and Ullenwood

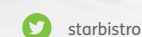
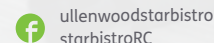
Support this National Star social enterprise, which works in partnership with young people with disabilities.

'This is a gem of the Cotswolds. The food, staff and ambience are all first class. I go back time and again. I'd recommend it to anyone.'
TripAdvisor review



StarBistro at Ullenwood
Tel 01242 535984
Email starbistro-u@nationalstar.org

StarBistro at Royal Crescent
Tel 01242 572958
Email starbistro-rc@nationalstar.org



www.starbistro.org

National Star and StarBistro are working names of National Star Foundation, a charity registered in England and Wales number 220239



National Star

Realising the aspirations
of people with disabilities

**Proud Sponsor
of FestABLE**



Speakers & Presenters



Barney Angliss - With 27 years in SEND teaching, leadership & campaigning, Barney is committed to principles of equity & autonomy in the education of young people with additional needs. He has taught, commissioned, improved & defended SEND provision for young people with neurodevelopmental, sensory & emotional needs across the mainstream, alternative & voluntary sectors & local authorities. He has spoken about SEND on radio, TV & in film. Barney was diagnosed with Asperger's Syndrome in his 40s.



Ben Allchin - Ben is in the lucky position of managing a team of dedicated, passionate & talented staff who create EHC plans & work toward achieving the best possible outcomes for children & young people with SEND across the city of Sheffield. Ben recently moved from Leeds where, over the past six years, he was heavily involved in leading the implementation of the Children & Families Act including the co-production programme with parents & young people, & the conversion of statements to EHC plans.



David Bartram OBE - David has visited & worked with more than 300 schools. Between 2009 & 2017 David was Director for SEND at the London Leadership Strategy, a not-for-profit organisation run by serving headteachers, he is a regular speaker at international conferences & works closely with the British Council to support the development of SEND policy overseas. David is co-author of the SEND Review Guide, a national peer-review framework that has now been downloaded by over 4,000 schools. David has led outstanding SEND provision in London schools for over 15 years & he was awarded an OBE for services to Special Educational Needs & Disability in the 2016 New Year's Honours list.



Charlie Beswick - Charlie is mum to 12-year-old twins Oliver & Harry. She was unaware of & unprepared for Harry's diagnosis at birth of a rare craniofacial condition called Goldenhar Syndrome. Harry is also non verbal, autistic & has significant learning difficulties. Charlie wrote her book 'Our Altered Life' for parents who may feel overwhelmed at the start of their journey which has been endorsed by the Children's Craniofacial Association of America as a fantastic resource. She also blogs at 'Our Altered Life' where she promotes education, awareness & the power of a good sense of humour!



Renata Blower - Renata is co director of Special Needs Jungle as well as sitting on various advisory committees for children's charities, medical training, strategic planning & SEND provision amongst others. She has been at the forefront of changing government policy around need-based intervention rather than diagnosis led & succeeded in bringing about the world's first specialist nurse for undiagnosed children at Great Ormond Street Hospital. She is also a primary school SEND governor, an RSA fellow & the mother of three children, two of whom have complex medical needs & disabilities.

Speakers & Presenters



Dr Adam Boddison - Adam is Chief Executive of nasen (the National Association for Special Educational Needs) with responsibility for strategic direction & operational delivery. Prior to this, Adam held a number of senior education roles including Director of the Centre for Professional Education at the University of Warwick, Academic Principal for IGGY (an educational social network for gifted teenagers) & West Midlands Area Coordinator for the Further Mathematics Support Programme. Adam is a Trustee of the Active Learning Trust & the Potential Trust & is a National Leader of Governance.



Zoe & Paul Bojelian - Zoe is mum to the late Adam Bojelian, who sadly died from sepsis aged just 15 years old in 2015. Adam gained international fame for his multi-award poetry & blogs. Supported by Adam's dad Paul & Adam's much-loved dog Charlie, Zoe will tell the story of Adam's life, illustrated by Adam's own words & music. In addition to being Adam's mum, Zoe is a legal academic, teaching at York University's law school & Edinburgh University's medical school. Zoe has recently completed her PhD which looks at doctors' decision-making for children with disabilities. Zoe works closely with several national health organisations serving on guidelines & research committees.



Jonathan Bryan - Jonathan, aged 12, believes passionately that all children are entitled to literacy education regardless of their label. Described as having profound & multiple learning difficulties (PMLD) himself, he was not offered this opportunity within his special school. Instead, taught to read & write at home, Jonathan is now enrolled in mainstream secondary, & campaigns under the banner 'Teach Us Too'. Aspiring to change the educational experience, Jonathan works towards a time when our education system & the professionals working within it assume children with PMLD can be competent. His book 'Eye Can Write' is being published on 12 July.



Elly Chapple - Elly is driven to make change with passion & honesty for our amazing exceptional children, thanks to her greatest teacher - her phenomenal eldest daughter. Turning a serious negative into a huge positive, Elly developed & manages daily an extraordinary 'A Team' of intervenors & an 'out of the box' approach for education. Currently writing about values, ethics & excellence in practice supported by colleagues in the USA. Aiming to blog/vlog successfully & learning how to tweet. 'CanDoELLA' is a moving story rooted in the value of authenticity, belief, hope & a mission to change things for our exceptional children.

Speakers & Presenters



Victoria Coyle - Victoria has significant experience working at senior management level in the area of SEND & understands the challenges & opportunities this brings to local authorities. Her experience includes managing both the SEND transport & the statutory assessment teams in the London Borough of Hillingdon & currently she leads the SEN team in Leeds, which is now recognised both locally & nationally as having models of good practice. Victoria loves working for Leeds & enjoyed leading on the implementation of some of the key areas of change from the Children & Families Act 2014. Her master's dissertation focused on the voice & influence of children with SEND in decision making & she continues to be passionate about translating this into everyday working practices.



Dr Helen Curran - Helen is a Senior Lecturer in SEN at Bath Spa University, overseeing the National Award for SENCo & master's in inclusive education. Having trained as a primary school teacher, Helen quickly found her passion for inclusion & SEN. Initially working in Oxfordshire & Wiltshire as a SENCo & assistant headteacher, Helen subsequently worked for Wiltshire local authority as a school SEN & dyslexia consultant. Helen's research focuses on the role of the SENCo & SEN/ inclusive policy; in particular the implementation of the SEND reforms. She is currently writing a book focusing on the changing SENCo role & inclusive practice. She is passionate about advocating for the SENCo role, & the positive impact this can have on children, young people & families. Helen regularly tweets about SEN policy & the role of the SENCo (@hel_curran).



Martha Currie - Martha is CEO & Co-founder of Mable Therapy. Mable has combined cutting edge gamification technology & telepractice to change the way speech & language therapy is delivered to schools. Martha is a strong advocate for digital therapy. She has written the national clinical guidelines on telepractice for the Royal College of Speech & Language Therapists (RCSLT) & now consults for the RCSLT on digital health issues.

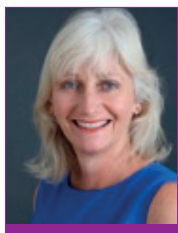


Jules Daulby - Jules is senior consultant at Driver Youth Trust, a charity dedicated to improving the chances of children with SEND & literacy difficulties. She began life as an English & drama teacher in a large comprehensive, was promoted to deputy head of sixth form & then dropped it all to go to the Falkland Islands becoming a radio news broadcaster. On Jules' return to the UK she began working as a Parent Partnership Officer which changed her outlook on how schools communicate with parents. Since then, Jules has worked in further education & higher education as an English lecturer & learning support tutor before working for Dorset's SENSS service. Before taking up her current post, Jules was Head of a speech & language base & alternative curriculum in a mainstream school alongside co-ordinating literacy across 17 schools.

Speakers & Presenters



Claire Dorer - Claire has been Chief Executive of NASS since 2005. She previously held policy responsibility for non-maintained & independent special schools in the Department for Education. Claire started her working life as a psychologist, working in both child & adolescent & adult mental health services. She has a number of publications on the topic of self-harm from her time as a research psychologist at Birmingham Children's Hospital. She also taught psychology & managed the community care pathway on the University of Birmingham's social work programme. Within NASS, Claire works with over 290 special schools, catering for more than 10,000 children & young people with complex needs. Claire represents the sector in work with central & local Government & Ofsted & has recently been involved in work on the SEN Reforms, Quality Standards & Public Procurement Regulations. Claire is a published poet, cartoonist & music journalist.



Sarah Driver - As a parent of four children, three of whom are dyslexic, Sarah has spent the past 23 years struggling with the education system. Her motivation, as founder & chair of Driver Youth Trust is to ensure that no child goes through what her children did. Sarah is passionate that learners can leave education & continue their working lives knowing what it means to be able to succeed. Her work through DYT's Drive for Literacy Programme ensures that inclusive literacy is embedded throughout the whole school. Sarah now divides her time between running Rathfinny Wine Estate & leading on strategy at DYT.



Andy Doyle - Andy started his career at RM plc & moved into a variety of technology-based business development roles before spending 11 years at The Chartered Institute for IT. In his time at the institute he grew & led the enterprise sales team & latterly headed up the global channel business for vocational IT certifications. Prior to joining Jisc, Andy graduated from Coventry University with an MA in Global Entrepreneurship & gained valuable experience as a consultant working with technology startups.



David Ellis - David has been Chief Executive of National Star since August 2010. He has worked in the voluntary sector for 30 years, both overseas (Sudan) & in the UK, during which time he gained valuable experience working in the disability field with a number of charities that were focusing on the development of technology to improve individuals' communications & control of their environment. David was Chief Executive for CLIC - Cancer & Leukaemia in Childhood (2001-2006), during which time he merged CLIC with its sister charity Sargent Cancer Care for Children after which he earned the appointment as CEO for the merged charity, CLICSargent. Other charities David has worked for at a senior level have included Guide Dogs for the Blind, The National Trust & the British Red Cross.

Speakers & Presenters



Nigel Ellis - Nigel is Chief Executive at the Local Government & Social Care Ombudsman, undertaking independent investigations of councils & care providers. Previously he was in charge of National Inspection at CQC & at the Healthcare Commission, for leading high profile investigations into NHS failures including high mortality rates at Mid Staffs NHS Trust, abuse of people with learning disabilities at Cornwall Partnership Trust, & the failure of services to Peter Connolly ('Baby P') in Haringey. Nigel also worked in different roles in the voluntary sector, as a Parliamentary lobbyist & consumer rights researcher.



Nigel Evans - Until May 2018 Nigel was one of Her Majesty's Inspectors for further education & skills & the national lead for learners with high needs. He wrote the survey report Moving Forward on the implementation of the Children & Families Act. Before becoming an inspector Nigel had extensive experience in further education where he developed & managed a range of innovative programmes for learners with learning difficulties & disabilities, young people excluded from schools, adults with mental health difficulties & people returning to, or entering employment. Nigel is now a freelance consultant & able to spend more time on his other interests, cycling & jazz music.



Tom Emerson - Tom is a Senior occupational therapist who has been a member of the National Star occupational therapy team for the past two academic years. Prior to this Tom worked as an occupational therapist in the field of learning disabilities & in the acute medical setting. Since joining the National Star team, Tom has taken a particular interest in assessing functional vision & supporting visual engagement in the academic & wider college environment.



George Fielding BEM - George has spent the past 15 years campaigning for the rights of disabled people across the UK. He is a founding member of the #IWill campaign, which promotes social action among 10-20-year-olds. In 2014, aged 19, George was awarded the British Empire Medal in the Queen's New Year's Honours List for services to disabled people. He achieved this after becoming the first wheelchair user to complete his Bronze Duke of Edinburgh Award & leading the youth engagement strategy as the chair of the board of Young Trustees at Whizz-Kidz. Resolute in his passion for inclusion, integration & equal opportunity in 2017 George co-founded Adjuvo a national support & care provider. At Adjuvo he has the pleasure of acting as their partnerships & personalisation director, principally fighting for high quality accessible housing & a new approach to support work.

	STREAM 1 - SPORTS HALL	STREAM 2 - MANOR LOUNGE	STREAM 3 - DRAWING ROOM	STREAM 4 - TRAINING CENTRE	STREAM 5 - NEW COURT 6	STREAM 6 - COMMITTEE ROOM	STREAM 7 - NEW COURT 9	STREAM 8 - NEW COURT 15	STREAM 9 - NEW COURT 18	STREAM 10 - MULTIMEDIA STUDIO	STREAM 11 - THEATRE	STREAM 12 - ART & DESIGN	STREAM 13 - STARBASE NEW COURT	STREAM 14 - VARIOUS LOCATIONS
	REGISTRATION OPENS AT 9.00													
10:00 - 10:45	OPENING KEYNOTE The SEND journey: Are we nearly there yet? David Bartram OBE, Sarah Driver, Bob Reitemeier CBE & Tania Tirraoro										TwoCan Theatre Toucan performance	A celebration of summer National Star creative children's workshop		All-day activities include: Assistive Communication & Technology New Court - Karten Centre 14a
	MORNING BREAK 10:45 - 11:15 Visit drop in sessions, market stalls & live performances in the Festival Village													
11:15 - 12:00	Assisting our future: How Jisc technology services support us Andy Doyle & Rohan Slaughter	Putting it all together: creating successful intervention in schools Sarah Driver & Chris Rossiter with guests	These are our children Jonathan Bryan, Elly Chapple & George Fielding BEM	SEND 2018: The parents' perspective Renata Blower & Tania Tirraoro	LEAP early autism intervention Laura Wilby	Building the SEND workforce David Bartram OBE (Chair), Dr Helen Curran, Anne Heavey & Simon Welch	Person-centred practice Michael Surr	Introduction to Lego-based therapy within a specialist setting Dannii Keenan	ResearchSEND: Journal Club Michelle Haywood & Sarah Rhodes	Listening through stories Storyworlds Life Sandra Smith & Dr Esther Walker	TwoCan Theatre Toucan workshop	10 spaces to be signed up for on the day, must be age 4+, booked spaces do not include support	Natspec: Have your say Natspec facilitated feedback drop-in zone	Circus-themed immersive sensory space New Court - Karten Centre 14b
	MORNING BREAK 12:00 - 12:30 Visit drop in sessions, market stalls & live performances in the Festival Village													
12:30 - 13:15	KEYNOTE Good Intentions, Good Enough? Nigel Ellis, Nigel Evans, Dr George Julian, & Kathryn Rudd OBE (Chair)	How children learn language Professor Caroline Rowland	These are our children Josh Reeves & Alice Soule	Celebrating Adam: A conversation with Zoe & Paul Bojelian Zoe & Paul Bojelian	Experiential PMLD & autism workshop Rachel Fitzpatrick & Stuart Saxton	Building the SEND workforce: A strategy for the future Jules Daulby (Chair), Claire Dorer & Simon Knight	Education, Health & Care Plans: A new foundation or a near failure? Ben Allchin, Victoria Coyle, Rhena Khan, Daisy Russell, Tessa Philbert & Eleanor Wright	Functional vision (assessment & strategies) Tom Emerson & Suzanne Pollard	ResearchSEND: Journal Club Michelle Haywood & Sarah Rhodes	Listening through stories Storyworlds Life Sandra Smith & Dr Esther Walker	TwoCan Theatre Toucan performance	Lunchtime Film Showcase Special Needs: Failure to Educate 13.30 in Theatre	Irwin Mitchell Legal Surgery Drop in with any legal questions or issues relating to SEND EHCPs & funding issues	A quiet break-out space for people with disabilities Physiotherapy 14c
	LUNCH 13:15 - 14:15 Visit drop in sessions, market stalls & live performances in the Festival Village													
14:15 - 15:00	Is that it? The impact of the Children & Families Act Renata Blower, George Fielding, André Imich, Simon Knight & Gareth D Morewood (Chair)	What is the future for speech & language support? Martha Currie, Mary Hartshorne (Chair), Dannii Keenan, Wendy Lee & Stephen Parsons	These are our children Elly Chapple, & Max J Green & Jon Reid	What does the world know of us? Charlie Beswick & Jen Persson	Experiential PMLD & autism workshop Rachel Fitzpatrick & Stuart Saxton	Testing the water: assessment & SEND Will Millard & Bart Shaw	Governing with parents, carers & young people Dr Adam Boddison, Bethlyn Killey & Julie Lamb	Physio beyond the plinth Verity Fisher	SOSISEN parent workshop Eleanor Wright	Listening through stories Storyworlds Life Sandra Smith & Dr Esther Walker	TwoCan Theatre Toucan workshop	A celebration of summer National Star creative children's workshop	National Star: Look Inside My Life National Star peer-led research project	Have a go: accessible sports boccia & polybat, run by StarSports Dance Studio 14e
	AFTERNOON BREAK 15:00 - 15:30 Visit drop in sessions, market stalls & live performances in the Festival Village													
15:30 - 16:15	CLOSING KEYNOTE Sally Phillips in conversation with Barney Angliss Sally Phillips & Barney Angliss											10 spaces to be signed up for on the day, must be age 4+, booked spaces do not include support		A variety of market stalls Festival Village with fairground activities, face painting, animal displays, live music, food & drink & much more Wheelchair accessible tethered hot air balloon rides weather permitting & sign up only StarGolf Course

Speakers & Presenters



Verity Fisher - Verity is the physiotherapy manager at National Star where she has worked since 2012. Previously an NHS physiotherapist with a particular interest in neurology & respiratory care, including intensive care, Verity has developed her specialism within neurology, particularly with acquired brain injury (ABI). Involved with the All-Party Parliamentary Group examining ABI provision, Verity also links with the Postural Care National working group aiming for a standardised strategy for those with profound & multiple learning difficulties. An outdoor enthusiast, Verity leads National Star activity trips including having initiated skiing. Since 2016, she has run annual ski trips with over 50 students having experienced the freedom of skiing with this year's group being joined on the slopes by BBC Breakfast. Students implement skills learnt, in physiotherapy & the wider college, in a refreshingly different environment.



Rachel Fitzpatrick - Rachel has been working as a specialist autism spectrum condition (ASC) tutor at National Star since 2012 & as a senior ASC tutor since 2017. She has 25 years' experience in working with adults with learning disabilities both in the care & learning sector & also as a psychodynamic counsellor. The young adults that she teaches at National Star have autism with associated learning disabilities & this informs the style & content of her teaching practice. This consists of adhering to a clear structure & routine within sessions, maintaining an environment that reduces sensory overload & allows the students the time they need to process & respond to communication.



Max J Green - Max is an actor & Youtuber. He makes videos to try & make people's lives better & to make people smile. He started acting in 2009 doing some small shows to big shows. In 2015 he appeared on Holby City & then went on to film in Doctors & starred in the National Autistic Campaign video called Too Much Information - Could you stand the Rejection. Max has Aspergers & holds this campaign close to his heart. He also does public speaking as he likes to share stories about his experiences with Aspergers. Max works full-time in IT & also won Apprentice of the Year 2016. He has been on Youtube since 2009. MaxiBlog was created August 3rd 2013.



Mary Hartshorne - Mary is Head of Evidence for I CAN, the national children's communication charity. She has responsibility for ensuring I CAN runs high quality programmes of work with evidence of impact. She is a specialist speech & language therapist with many years' experience of working in education - both as a practitioner & manager. She has authored many of I CAN's discussion papers, notably The Cost to the nation of Children's Poor Communication. Mary is leading Bercow: Ten Years On - a national review of provision for children & young people with speech, language & communication needs (SLCN), published March 2018.

Speakers & Presenters



Michelle Haywood - Michelle is currently a senior lecturer for Initial Teaching Education (ITE) & head of primary placements at the University of Wolverhampton, as well as being deputy editor of 'Pedagogy In Practice' & co-founder of ResearchSEND. Michelle has a wide range of experience in the SEND sector, undertaking roles such as head of a SEND support service, deputy headteacher, EY SEND advisory teacher, teacher in charge of a dyslexia centre, lead teacher in an EY Enhanced SEND provision & SENCO. Michelle continues to work with Schools to enhance SEND provision through her lead role for the development & execution of SEND strategy for the 17 schools which make up the University of Wolverhampton's Multi Academy Trust. Michelle's research interests include the leadership & management of SEND, supporting SEND in ITE & learners experiencing literacy difficulties.



Anne Heavey - Anne is an Education Policy Advisor at the National Education Union, & leads work on SEND, curriculum & assessment within the Association of Teachers & Lecturers (ATL) section of the union. Whilst at ATL Anne has undertaken several research projects exploring the implementation of the SEND Code of Practice & the impact on the school workforce. Prior to joining ATL Anne worked as a secondary school music teacher & head of department in North London & Nottinghamshire.

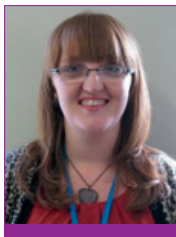


André Imich - Since April 2010, André has worked as the Department for Education SEN & Disability professional advisor, contributing to a range of policy developments, in particular the Children & Families Act. André has been a teacher & educational psychologist & held a number of practitioner & leadership roles in local authorities. He was a regional SEN director for the National Strategies SEN advisor team & was an advisor to the Lamb Inquiry into parental confidence.

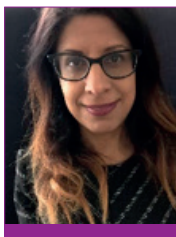


Dr George Julian - George hates trying to sum herself up in 100 words. She's part blogger, tweeter @GeorgeJulian, researcher, online activist #JusticeforLB & offline craftivist. She is a freelance knowledge transfer consultant, an advocate supporting bereaved families, Visiting Fellow at LSE, a trainee death doula & a 2017 Winston Churchill Memorial Trust Fellow. Growing up George wanted to be a special education teacher or a Blue Peter presenter. She achieved neither but has a degree in education & a PhD in profound & multiple learning disability. She is deeply committed to #OpenJustice & live tweeted the inquests of Connor Sparrowhawk & Richard Handley.

Speakers & Presenters



Dannii Keenan - Dannii is a specialist speech & language therapist at National Star, working with students with profound & multiple learning disabilities & autistic spectrum disorder. She has been heavily involved in developing the embedded practice initiative, recognising the importance of contextual therapy & role modelling of communication support strategies, to maximise functional skill development for learners with complex needs. Most recently, Dannii has completed the Bricks for Autism training course to become a Lego-based therapy practitioner. Using her clinical experience of adapting therapeutic approaches to ensure accessibility for more complex learners, this social communication intervention is demonstrating positive outcomes for individuals with a range of needs, including sensory processing & behavioural difficulties. Having worked at National Star since 2013, Dannii now co-ordinates the speech & language therapy team.



Rhena Khan - Rhena is currently the Post 16 team lead/manager at Leeds local authority in the SEND team. Her background includes a degree & masters in economics, a stint in the private sector before spending several years in management at the local careers service. She has led on key areas of change from the Children & Families Act 2014 with her main area of responsibility being the post 16/19 - 25 cohort. Rhena has experience of key partnership working & is focussed on developing this work to ensure successful outcomes for these young people/adults. She has also been key in the Preparation for Adulthood agenda for Leeds which has included the initial pilot & roll-out of supported internships.



Bethlyn Killey - Bethlyn has spent 10 years working within local authorities, predominately in education (non-teaching) & policy & research & spent six years as a senior management consultant specialising in education & children's services. She is a parent of three children, the eldest of whom has a variety of diagnoses & who has attended eight educational primary placements covering mainstream, special school, ASD unit within mainstream & home education. Bethlyn is the SEND link parent-governor of a large primary academy & teaching school with ASD unit & the inclusion trustee of an academy chain.



Simon Knight - Simon has around 20 years' experience of working with children with SLD & PMLD & has held a number of roles in the area for special education. He has sat on the Department for Education panels developing both the Professional Standards for Teaching Assistants & the Standard for Teachers' Professional Development. He has been published in SLD Experience, Teach SENCO, has written chapters in books & writes features for the TES. He regularly contributes comment & content to other publications & conferences & can be found tweeting as @simonknight100. He is currently the director of Whole School SEND, a consortium of organisations committed to enhancing the quality of education for learners with SEND.

Speakers & Presenters



Julie Lamb - Julie has been a governor within a special school since 2006. In 2015 she became a National Leader of Governance. Julie is currently deployed providing governance leadership to a primary school with a large cohort of SEND learners. Since 2008 Julie has been a member of the overview & scrutiny committee for children & learning in the local authority, representing special schools, contributing to strategic policy decisions about education within the borough. In 2017 she was elected to the board of the Havering Academy of Education Leadership. Julie is mum to Tom, 20, who has Fragile X Syndrome, complex learning disabilities & autism.



Wendy Lee - Wendy has worked as a speech & language therapist for over 30 years, in clinical practice, as a senior lecturer & in the third sector. She was a professional advisor at I CAN & professional director at The Communication Trust until 2015 where she led on a number of projects to develop & share interventions, information & resources, as well as inputting on national policy & research. Wendy is currently the Director of Lingo, an organisation that provides consultancy, practical resources, professional development & speech & language therapy to schools & settings. Wendy also enjoys working in partnership with local & national organisations such as I CAN & the Royal College of Speech & Language Therapists, Cambridge University, Driver Youth Trust & The Communication Trust on all things speech, language & communication.



Will Millard - Will is a senior associate at LKMco - the education & youth 'think & action-tank' - where he has led research into a wide range of issues including assessment, enterprise education & oracy. Will has also conducted evaluations for organisations including Arts Council England & Researchers in Schools & presented at events & conferences across the UK. He began his career as an English teacher at a large secondary school in North West London & then worked at a national support service for school leaders & governors. Will has visited schools around the world, has two master's degrees in public policy & lives in Hackney.

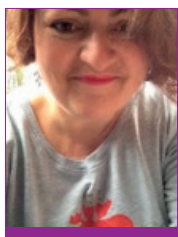


Gareth D Morewood - has been the director of curriculum support (SENCO) at Priestnall School in Stockport since September 2002. During this time he has shaped provision not only at Priestnall but also in a number of other schools and local authorities across the UK, Ireland & Chile through research-based support, training & consultancy. Gareth also supports parents/carers with SEND legislation & provision. Gareth has written extensively on inclusive education & provision & regularly speaks at & chairs national conferences on provision for students with complex needs. He can be contacted via his website www.gdmorewood.com or email info@gdmorewood.com & tweets @gdmorewood.

Speakers & Presenters



Stephen Parsons - Stephen has worked as a speech & language therapist for over 25 years. Until recently he worked as an SaLT service manager in Hackney in London, but is now working as a freelance trainer & author. He is particularly interested in how whole class practice can include children with developmental language disorder. Stephen has co-authored, with Anna Branagan, 'Word Aware' (2013), 'Word Aware 2' (2017) & 'Language for Thinking' (2nd edition, 2017). Since 2015 Stephen has been the chair of NAPLIC, the association for professionals supporting language (www.naplic.org.uk). Stephen is active on Twitter via @WordAware.



Jen Persson - Jen is a human rights campaigner for better data privacy in education. She is passionate about promoting the future growth & flourishing of every child. Jen is a mum of three & director of defenddigitalme. The parent-teacher #LabelsLastALifetime campaign is about the new 2018 census in Alternative Provision & SEND. defenddigitalme wants to stop the government giving away personal confidential data to companies, journalists, & others without consent, & start safer, fairer policy & practice. Do you know your rights, & can you help us make a difference? defenddigitalme was funded in 2017-18 by the Joseph Rowntree Reform Trust.



Tessa Philbert - Tessa's work within the SEND field began 12 years ago when she worked as a learning support assistant in a school for pupils with complex needs. Inspired by this experience, she went on to study a degree in special educational needs & inclusive education. She is currently the manager of a Special Educational Needs & Disability Information Advice & Support Service (SENDIASS) in Newham. She has conducted small-scale research focusing on the role of learning support assistants in special schools & the challenges/implications of managing challenging behaviour for staff & pupils. She has also written for Special Needs Jungle on the topic of parent participation in decisions being made about their children & young people.



Sally Phillips - Award-winning writer & actress Sally Phillips is well known for her roles in Smack the Pony, Miranda & the Bridget Jones trilogy. Sally also fronted a BBC documentary titled, A World Without Down's Syndrome?, in which Sally wades into the emotionally-charged debate about a new screening test that is said to detect Down's Syndrome in 99% of pregnancies & explores what effect the test could have on our society. A World Without Down's Syndrome has been screened around the world, sparking debate & similar documentaries in many other countries.

Speakers & Presenters



Suzanne Pollard - Suzanne graduated as an occupational therapist (OT) in 2003 & has worked in a range of physical & mental health settings from community & acute mental health services, burns & plastic, orthopaedics to hand therapy. Suzanne is her tenth year working at National Star specialising in working with individuals with complex learning & physical disabilities. Suzanne became interested in the assessment of visual impairment after attending lectures by Christine Roman-Lantzy who discussed cortical visual impairment & explained how to assess for this condition with individuals with complex disabilities. The OT team now uses this assessment tool & uses some of these strategies to support students in different learning environments.



Josh Reeves - Josh is on a mission to change people's perspectives about disability. The disability rights campaigner earned his spurs by starting his own campaign - Don't Call Me Special - whilst he was a student at National Star College in Cheltenham. He plans to target schools in the UK & abroad, talking to non-disabled pupils & staff with the aim of challenging & informing their ideas of what disability means. In 2018 he led the youth forum at the I Am Able conference in Antigua, which saw people from across the world discuss topics including access to education, employment & health. He is known for confronting people's vocabulary & views. Josh, who has cerebral palsy, also starred in the BBC 3 documentary, 'The Unbreakables', which was filmed at National Star. Josh is currently studying media at Cardiff & Vale College.



Jon Reid - Jon (MSc Oxon, PCTHE, PGDES, PGCE, BA (Hons), MBPsS, FHEA), joined Oxford Brookes University as senior lecturer in SEN/Inclusion following a teaching career in both primary & secondary education. During his mainstream educational experiences, Jon developed an interest in supporting pupils with additional learning needs. Subsequently, he spent time teaching in a therapeutic residential school catering for pupils who had experienced severe emotional trauma due to the accumulation of adverse experiences in infancy & early childhood. He later became the deputy headteacher of an independent secondary social, emotional & mental health school that specialised in supporting pupils with complex educational needs, communication difficulties & challenging behaviours.



Bob Reitemeier CBE - Bob has over 30 years' experience in the voluntary sector in England & internationally. Prior to his appointment at I CAN, he was chief executive of Essex Community Foundation & chief executive of The Children's Society. Internationally, Bob started his career as a secondary school teacher in Zaire, followed by posts as country director for Volunteers in Technical Assistance (VITA) in Chad & country director for ActionAid in Bangladesh. He settled in England in 1994. Bob has a son with autism & has personal experience of navigating the challenges of the special educational needs system. Bob has served on several national boards supporting children & young people, including The Youth Justice Board, the Social Work Task Force, the Children's Workforce Development Council & as chairman of Children England. He received a CBE for services to children in 2012.

Speakers & Presenters



Sarah Rhodes - Sarah has worked extensively in learning support & specific educational needs for more than a decade. She has a passion for diversity & inclusion, drawing upon her experience as a secondary, further & higher education teacher to influence her approaches to person centred learning. In her role as disability services manager at the University of Wolverhampton, she led on the development of specialist staff contracts, considerate marking scheme & the inclusivity & accessibility of the student portal. In her most recent role, Sarah co-leads the inclusion development project within the Institute of Education & assists with ResearchSEND.



Chris Rossiter - Chris is Driver Youth Trust's (DYT) chief executive. Chris started his career training as an occupational psychologist (OP) & has experience of working in research, policy & as a practitioner. At first glance OP might not seem relevant to a career in education, however his expertise in training & professional development, & organisational systems are invaluable to what DYT does; it is these systems which are his particular area of interest in schools. The research & policy output of DYT is also part of his role, as well as overseeing the implementation of the charity's strategy. Chris works alongside the DYT team & network of partners to ensure the design, delivery & development of projects, such as 'Drive for Literacy'. Aside from his DYT role, Chris is also governor at an infant school in Berkshire, a Fellow of the Royal Society of Arts, a member of the British Psychological Society & sits on the executive board of the Division of Occupational Psychology.



Professor Caroline Rowland - Caroline is director, language development department, Max Planck Institute for Psycholinguistics & co-director, ESRC LuCiD Centre, University of Liverpool. She is a researcher who studies how children learn to communicate with language, with a particular interest in grammar & in assessing how the child's environment promotes & shapes language growth. Her first study into language development was a diary study in which she recorded every single question produced by her two-year-old daughter over a nine-month period. Nowadays her work is less time-consuming. Her recent book, 'Understanding Child Language Acquisition', is an introduction to the most important research on child language acquisition over the past 50 years, as well as to some of the most influential theories in the field.



Kathryn Rudd OBE - Kathryn has spent over 25 years working in partnership with young people with SEND, their families and friends. She is an Ofsted inspector, director of Natspec & is managing director of a group of schools and colleges across the UK. She is also privileged to have been principal at National Star. She received an OBE in 2014 for her services to further education for young adults with physical & learning disabilities & acquired brain injuries.

Jisc

Working with
our members
to transform
learning
and teaching

Powering people

 jisc.ac.uk

 twitter.com/jisc

 facebook.com/jiscsocial

Speakers & Presenters



Daisy Russell - Daisy is the Information, Advice & Support Services (IASS) network manager & oversees the provision of a range of training & support for IASS's across England. She joined the Council for Disabled Children (CDC) family 12 years ago & previously worked in a Parent Partnership Service in the London borough of Tower Hamlets. Daisy also has a degree & MA in Social Policy Administration. She loves working at CDC & enjoys travelling around the country meeting incredibly hardworking people doing a sometimes challenging & isolating job very well. She hates unfairness & strongly believes that giving children, young people & their families good information & advice helps redress the balance.



Stuart Saxton - Stuart is a senior tutor at National Star & a qualified Intensive Interaction co-ordinator. He now works mainly with students who have PMLD & also some with autism. Intensive Interaction is "a process that aims to enable communication & sociable interactivity." (Hewett 2012). Stuart mentors National Star staff to become better practitioners & improving both their Intensive Interaction skills with their students & their theoretical knowledge that supports Intensive Interaction & its use. Although he uses a wide variety of sensory tools & techniques when working with students, the main instrument Stuart uses when working with the students is himself. 'We are the best tool to improve the social communication of our students.'



Bart Shaw - Bart is a Senior Associate at LKMco, a 'think-&-action tank' that seeks to ensure society helps all children & young people make a fulfilling transition to adulthood. He is also a qualified secondary school geography teacher, with experience of middle leadership, & a former civil service faststreamer. Bart's career has blended policy, practice & research. His work has combined policy making at the heart of central government with teaching in a large mixed comprehensive school in rural Derbyshire. His recent work at LKMco has allowed him to develop his interest in the experiences of marginalised pupils, in particular those identified with Special Educational Needs & Disabilities (SEND).



Rohan Slaughter - Rohan works for Jisc as a subject specialist providing a range of advice, guidance & consultancy services to the education sector. Previously employed at Scope's Beaumont College as assistant principal & formerly as the head of technology. He led the development of the integrated 'technology team' deploying assistive technology/IT systems. He has worked on organisational strategy, general management & led a number of national scale projects including the Jisc funded Dart Project. In 2014 Rohan completed an MSc in computing & communication systems at Lancaster University that focused on how home automation & internet of things technology can be made accessible to disabled people. Rohan is currently vice-chair of the Karten Network board.

Speakers & Presenters



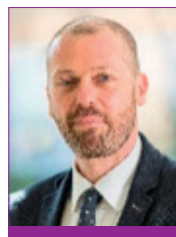
Alice Soule - Alice started writing her blog over two years ago as a way of documenting her experience of trying to get adequate support & schooling for her son Jude through the council. From initial contact, she was shocked at the complexity of the process & how vague support lines within the council appeared to be. Two years on, she still regularly writes about similar situations but also their life as a whole family with Jude & his two sisters. Alice has published a book, 'Living with A Jude' & has a support group attached to her Facebook page, called LWAJ SEN Support Group.



Sandra Smith & Dr Esther Walker - Storyworlds Life is a social enterprise committed to strengthening support around the child, young person or vulnerable adult so they can be healthy and happy. Our story based approach to learning brings together people who want to address an area of concern - individuals, families, practitioners, educators, policy-makers, voluntary sector and other stakeholders. Our tools and resources help them listen to one another, identify what's important and agree on what needs to change. Sandra Smith trained as a midwife and has over 30 years' experience within the NHS in clinical, education and strategic leadership roles.



Dr Esther Walker is a specialist in using drama and storytelling for learning and development. www.storyworlds.life



Michael Surr - Michael is an education development officer with nasen & also editor of 'nasen Connect'. His background is in primary education both in the UK & abroad. He has worked as a class teacher, SENCO & deputy head. Since beginning his career in education he has had a keen interest in SEN, ICT & equalities issues. From 2008, before joining nasen Michael worked on the leadership team of a local authority SEND advisory service which gave him the opportunity to broaden his experience in to early years & secondary.



Tania Tirraoro - Tania is a journalist & the founder of Special Needs Jungle (SNJ), the influential SEND blog/website & registered non-profit organisation. SNJ publishes resources, news, opinion & information for people living or working with children & young people with special needs, disabilities & health conditions. She is the parent of two young autistic men & also has an autism diagnosis herself. Tania is a member of the Ofsted LA SEND stakeholder advisory group. She is the author of three books & is also a social media expert working mainly with non-profits to help them leverage the power of social media for social good. www.specialneedsjungle.com

Speakers & Presenters



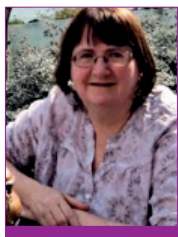
TwoCan Theatre - was set up in March 2014 by Louise Partridge, Nicola Miles-Wildin & Rebecca Andrews as a direct result of their frustrations at the lack of accessible & equal opportunities within the arts for professional & non-professional artists. It is a Gloucestershire-based theatre company that provides an inclusive accessible theatrical experience for artists, participants & audiences. TwoCan's DNA is about producing high quality work that not only challenges preconceptions of disability & dispels the notion of helplessness, but ensures its work reaches large & diverse audiences, no matter what barriers participants or artists may face.



Simon Welch - Simon is head of learning programmes at National Star. Having worked in the world of disability & special education for more than 17 years Simon has developed knowledge & experience in a range of setting & environments, with a particular area of focus on neurological motor disorders. Simon completed a BA honours degree in Conductive Education, diploma in Teaching in Life Long Learning & holds an Early Years Professional Status. In his current role Simon has led on developing a greater integrated approach in relation to learning & therapy at National Star for learners with the most complex needs.



Laura Wilby - Laura completed her undergraduate degree in Psychology & master's degree in autism education at the University of Birmingham. She spent some time working in various roles with children, adolescents & adults with autism before going on to complete her doctoral training in Educational Psychology at the Institute of Education, University of London. Since qualifying Laura has worked for the past eight years for Surrey County Council & in 2015 set up the Local Early Autism Programme (LEAP). She has recently had an article published in the Good Autism Practice Journal reflecting on the experience of developing & establishing this service.



Eleanor Wright - Eleanor is chief executive of SOS!SEN, a charity which helps the families of children with SEN & disabilities. She is a solicitor specialising in education law & worked in private practice until 2015. Her work includes leading workshops on various practical & legal aspects of SEN provision, advising parents & carers, helping with casework & drafting, training & supervising volunteers, lobbying & representing the charity on various committees. She is a committee member for the Education Lawyers' Association & the Richmond Dyslexia Association & a school governor. She writes Education Law updates for the Legal Action Group Magazine.



SUBSCRIBE NOW

**£15
A YEAR**

**6
ISSUES**

The leading lifestyle magazine in the UK for disabled people. Each issue covers accessible holidays, the latest products, topical issues, high profile interviews and much more.

posabilitymagazine/subscribe



SUBSCRIBE NOW

**£9.99
A YEAR**

**6
ISSUES**

The OT Magazine focusses that focuses on occupational therapists, celebrating innovation, emerging roles and flying the flag for this amazing profession.

ot-magazine.co.uk/subscribe

Market Stalls

Action For Kids Charitable Trust

We are a charity helping young disabled people to develop independence and find employment. At a national level, we provide mobility equipment not available on the NHS. We will be promoting our work and our new brand on the day.

T: 020 8347 8111 W: www.actionforkids.org

Boyes Turner LLP

We are a leading firm with expertise in special educational needs (SEN). We advise parents, other solicitors, case managers & other professionals. Unlike most education solicitors we specialise exclusively in SEN, helping children with learning disabilities get the extra help & support they need in the school they choose.

T: 0118 959 7711 W: www.boyesturner.com

Chartered College of Teaching

We are a voluntary, teacher-led organisation which supports professional development, promotes & shares evidence-informed practice & recognises excellence. We are independent of government & the unions.

T: 0207 911 5589 W: www.chartered.college

Cotswold Down's Syndrome Group (Friends of Daniella)

We are a friendly group providing support to individuals & families whose lives are touched by Down's Syndrome. In addition to giving support & advice to families with new babies & young children on a one-to-one basis we have a number of fun family regular meets & events. Our roots go back to 2004 but gained registered charity status in 2010. The concentration of our activities centre in Cheltenham currently offers support to families throughout the Gloucestershire & Cotswold area.

E: jenny@cotswolddownssyndrome.org or tania@cotswolddownssyndrome.org

Dimensions UK

As one of the country's largest not-for-profits supporting people with learning disabilities, autism, challenging behaviour & complex needs, we are driven by our values. People with learning disabilities & their families are at the heart of everything we do & we want every person we support to have a great life, with excellent outcomes.

T: 0300 303 9001 W: www.dimensions-uk.org

Education Psychology Service (EPS) & Advisory Teaching Service (ATS) (Gloucestershire County Council)

We provide a professional support service to schools & individual children & their families across Gloucestershire, surrounding counties & beyond to ensure children & young adults with a wide range of SEND & other additional needs are fully supported to enable them to access & thrive in education. Both services operate a trading arm & educational psychologists & or advisory teachers' time can be purchased for advice & training by educational settings.

EPS: 01452 328004 ATS: 01452 426955 E: deborah.shepherd@gloucestershire.gov.uk

Market Stalls

Education & Training Foundation

We offer CPD including support on: maths & English leadership & governance, ICT & Prevent. We work closely with practitioners & managers working with SEND learners to develop a dedicated range of resources to support this crucial part of the sector.

T: 020 3740 8280 W: www.et-foundation.co.uk

FestABLE Information

Our team will be on hand to help direct you & show you what's going on where. You will also be able to sign up to receive information about future FestABLE Festivals.

T: 01242 534722 W: www.festable.org

Home From Home Care

Created by Parents to make the difference; Home From Home Care provides specialist residential care to adults (18+) with learning disabilities and complex needs. We empower and encourage each individual to lead a fulfilled life through active days and meaningful outcomes.

T: 0800 587 0372 W: www.homefromhomecare.com

Irwin Mitchell Solicitors

Our highly specialised team combines powerful legal knowledge & experience to ensure that you receive the best possible support & guidance. Visit us at our stand or in our drop-in surgery to see how we can support you: where educational needs are not being met, to challenge health & social care decisions including provision, funding, placements & closure of services, with court of protection matters including deprivation of liberty.

T: 0370 1500 100 W: www.irwinmitchell.com

Jisc

We are the UK higher, further education & skills sectors' not-for-profit organisation for digital services & solutions. Dedicated entirely to the sectors' individual & collective needs. We are not a vendor: we deal with &/or work with vendors & publishers on the collective behalf. Objective, but not unbiased: we put the sectors' interests above all else.

T: 0300 300 2212 W: www.jisc.ac.uk

Langley Wellington LLP Solicitors

We offer legal services for parents of children & young people with special educational needs who are seeking advice in relation to Education, Health & Care Plans & appeals to the Special Educational Needs & Disability Tribunal & other educational matters.

T: 01452 521286 W: www.langleywellington.co.uk

National Star

Our team will be providing information on college courses, how to apply for a college placement, the assessment & funding process, our Steps into Work programme, as well as information on fundraising events & opportunities & some of the 50th anniversary celebrations. We will also have a stall selling a variety of gifts designed & produced by National Star students.

T: 01242 527631 W: www.nationalstar.org

Market Stalls

pdnet

We provide support for professionals in education who promote positive outcomes for children & young people with a physical disability. We are all volunteers with free membership & no salaried staff. We provide a forum for professional members to air concerns, disseminate & share expertise & knowledge & contribute to the formulation & development of policy at a local & national level.

W: www.pdnet.org.uk

Pets As Therapy

Pets As Therapy is a national charity that enhances health & wellbeing in the community through the visits of trusted volunteers with their behaviourally assessed animals. We provide a visiting service in hospitals, hospices, nursing & care homes, special needs schools & a variety of other venues all across the UK.

T: 01494 569130 W: www.petsastherapy.org

Special Needs Jungle

Special Needs Jungle was set up by parents. Many families don't get the help they need because they don't know where to look or how to cut their way through the increasingly complicated system. We highlight resources & inspire & empower families to do this successfully by providing easy to understand articles & information for parents & carers of children with special needs, disabilities & health conditions to better enable them to navigate the special needs system. Ultimately enabling families to self-advocate confidently to ensure their children get the help they need to live the best life they can.

W: www.specialneedsjungle.com

Tomcat SNI

Since its ground-breaking invention of Carer Control™, Tomcat has designed & innovated disability equipment with the disabled community & professionals, to find a way to solve ever more challenging problems. In doing so, Tomcat has changed the lives of many who thought that cycling was entirely beyond their reach.

T: 01452 616900 W: www.tomcatuk.org

Whizz-Kidz

We're working hard to transform the lives of disabled children across the UK, supporting them to become confident & independent young adults. Our mission is to transform the lives of disabled children by providing the equipment, support & life skills they need, when they need them – giving them the chance to develop their full potential.

T: 020 7233 6600 W: www.whizz-kidz.org.uk

Voyage Care

We are experts in supporting individuals with complex needs across the UK, such as: learning disabilities, physical disabilities, complex care needs, autistic spectrum conditions, acquired brain injuries, mental health conditions, people in transition, intensive support requirements, challenging behaviour. We provide person-centred, high quality care & support to over 3,000 adults & children in both registered care homes & people's own homes.

T: 0800 328 6091 W: www.voyagecare.com



Enjoy a fun and relaxing holiday

StarBreaks at Ullenwood

These four-night breaks are available to people with physical and learning disabilities or acquired brain injuries. They offer fully accessible accommodation, specialist facilities and a variety of exciting activities, including swimming, shopping and bowling.

Activity days at Mamhilad

Join our fun and interactive activity days in Wales, available to 16 to 25-year-olds with physical and learning disabilities or acquired brain injuries. Each day runs from 9am to 5pm.

Book your break

Tel 01242 534928

Email starbreaks@nationalstar.org

Web www.nationalstar.org/starbreaks

www.nationalstar.org/activitydays



National Star

Realising the aspirations
of people with disabilities

Festival Village Activities

Throughout FestABLE there will be a wide range of different fun activities going on in the Festival Village.

Music & Comedy Stage

All performances are during break times. Please see the stage for timings

The Vogwells - acoustic / folk

Camilla Lewington - pop

Robin Shaw - comedy

TwoCan Theatre - comedy showcase with Richard Newnham & Sarah Beauvoisin

Crazy Horses - rock

In addition to the music & comedy in our Festival Village we have:

10.45 -11.15	Punch & Judy show
All day	Beat the Buzzer
All day	Coconut shy
All day	Falconry static display in our Festival Village & full display on the Golf Course at 10.45, 12.00 & 15.00
All day	Face painting
All day	Giant Connect 4
All day	Giant Jenga
All day	Gloucestershire Fire & Rescue Service appliance & crew
All day	Hook a duck
All day	Horse shoe toss
All day	Hot air balloon rides (tethered) on the Golf Course. Wheelchair accessible basket. Booked at the hot air ballom on a first-come-first-served basis & weather permitting
All day	Skittles
All day	Traditional henna painted tattoos
All day	Test of strength fairground attraction

We hope you enjoy FestABLE...

Festival Information

Food & drink

Food is being served in a number of different locations including:

- StarBistro: tea, coffee, drinks, sandwiches, salads & various light bites
- StarBar: tea, coffee, drinks & a selection of sandwiches
- StarCafe: tea, coffee, drinks, sandwiches, baked potatoes & a variety of other hot dishes
- StarCafe Festival Village: tea, coffee, drinks, hog roast & hot dogs
- Festival Village: icecream van, popcorn & candyfloss.

Animals

No animals are allowed on site except assistance animals.

First aid

We have first aiders on site, next to College Green who will be able to assist with any medical incidents.

Fire / emergency

In the event of a fire please follow instructions from FestABLE volunteers or other fire marshals who will direct you to the nearest assembly point.

FestABLE help & information

Throughout the day our team of volunteers will be on hand to help direct you & show you what's going on where. FestABLE volunteers will be all around the site as well as at all the different sessions & will also be running an information point in the Festival Village. You will also be able to sign up to receive information about future FestABLEs.

T: 01242 527631 W: www.festable.org

Lost & found

If you lose a child or other family member or property whilst at FestABLE please make your way to our FestABLE information point in the Festival Village who will be able to assist.

Smoking

No smoking is permitted anywhere on site except designated smoking areas marked on the map.

Toilets

We have a large number of toilets across all buildings & areas of the site as shown on the sitemap including additional portable toilets on College Green & in the Festival Village. Most of our toilet facilities are fully accessible. Please note we also have personal care suites with hoists in the following locations: Reception, StarBistro, Sports Hall, Physiotherapy, New Court & an additional Mobiloo in the Festival Village.

FestABLe

Sitemap



Visitor car parking